



A1400 AIR RD

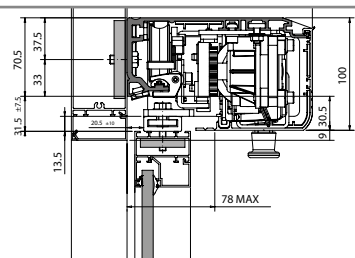
Automated system
for sliding doors along
escape routes

FAAC
Simply automatic.

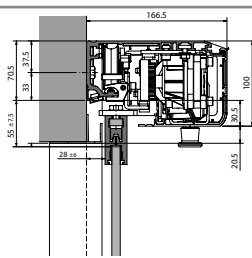
A1400 AIR RD

The right solution for any need you may have

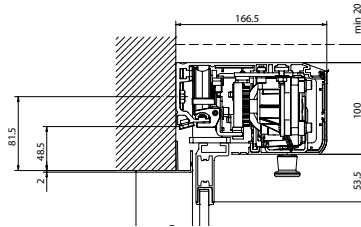
Solutions with cover h 100 mm



With commercial profiles / TK50

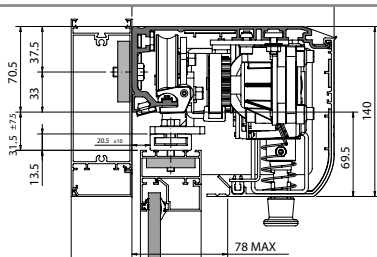


With FAAC clamp for flush glossy glass

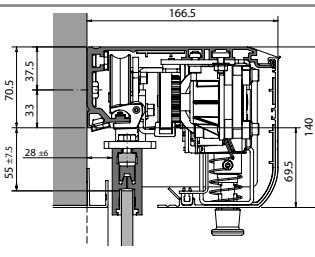


With FAAC TK20 reduced section profiles

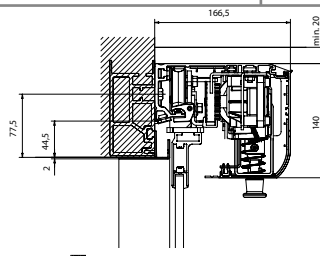
Solutions with cover h 140 mm



With commercial profiles / TK50

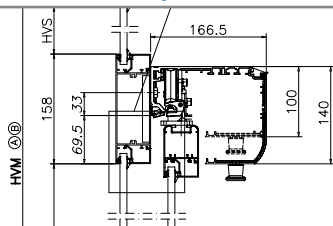


With FAAC clamp for flush glossy glass

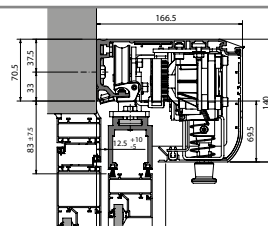


With FAAC TK20 reduced section profiles

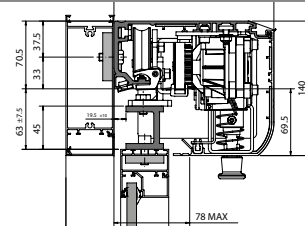
Solutions with special versions h 100 mm and h 140 mm



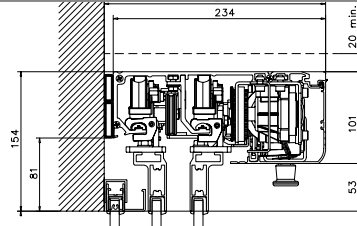
With self-supporting profile and spacers



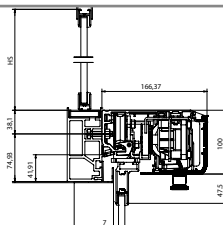
Installation on transom with transom window and FAAC TR50 profiles



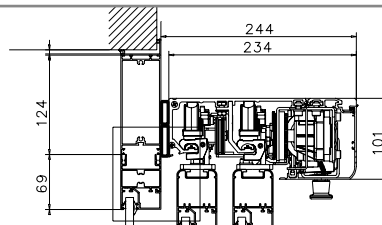
With spacers



Telescopic version with installation on brickwork



With self-supporting profile, transom window and FAAC TK20 reduced section leaf profiles



Telescopic version with installation on transom



Here comes the future

A1400 AIR RD

The first automated system for sliding doors designed to meet the market requirements and conceived to protect our environment. A1400 AIR RD has been designed to be installed along escape routes in compliance with the European Norm EN16005, EN 13849-1 Pl. "d" Cat. 3 and it is TÜV-certified.

Thanks to its innovative "Energy Saving" device, it detects the movement direction and optimizes the opening/closing time to avoid useless air dispersion also in case of side passages. This device enables to save energy and optimizes the temperature sudden changes inside the room and close to the same doors. And all this in total safety.

A1400 AIR RD is the automated system that can be customized and composed according to the technical and architectural needs of the customer. The best technical and architectural solutions can be accomplished thanks to two different housing covers, to the exclusive leaf connection systems and the different leaf profiles.

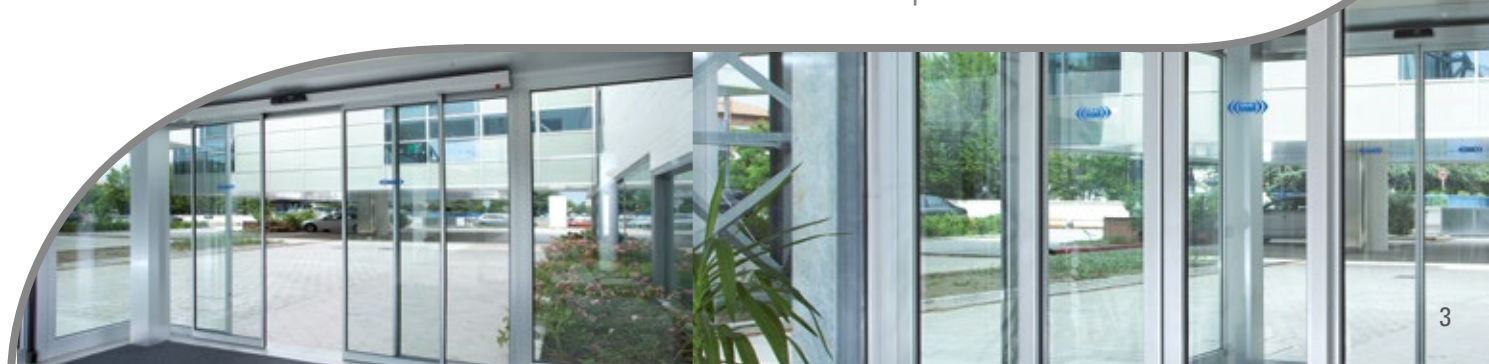
This solution has been designed to operate in any condition and environment and is the ideal solution for technicians willing to save in installation time, by rationalizing the stocks for the final customer who will have full access to a customized, environment-friendly, reliable, safe, technologically advanced product that is personalized, ecological, reliable, safe, technologically advanced and above all that will pay for itself over time.



Technical specifications

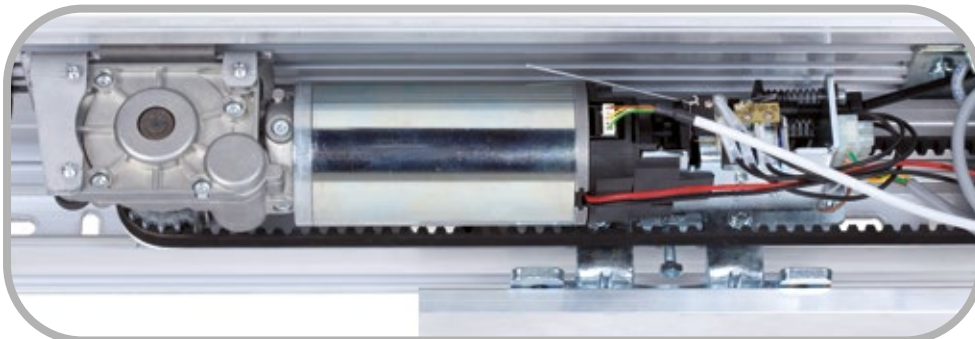
A1400 AIR RD

Mains power supply	115/230 Vac - 50 /60 Hz
Max. power	140 W
Use frequency	100%
Max. leaf thickness	65 mm
Motor	Motor supplied at 36 V \equiv with encoder
Auxiliary motor	Motor supplied at 36 V \equiv
Accessory max. load	1 A - 24 Vdc
Drive type	By electro-conductive toothed belt
Opening speed adjustment	10 ÷ 75 cm/s (1 leaf) - 20 ÷ 150 cm/s (2 leaves)
Closing speed adjustment	10 ÷ 75 cm/s (1 leaf) - 20 ÷ 150 cm/s (2 leaves)
Partial opening adjustment	5 ÷ 95% of total opening
Pause time	0 ÷ 30 s or Energy Saving function
Night pause time	0 ÷ 240 s
Encoder	standard supply
Protection sensor monitoring (EN 16005)	standard supply (can be excluded)
Low Energy movement (EN 16005)	standard supply (can be excluded)
Operating environment temperature	-20°C ÷ + 55°C
Protection class	IP 23 (indoor use only)
In compliance with the norms	
EN 16005; EN 13489-1 Pl "d" CAT3; EN 13489-2; EN 60335-1; EN 60335-2; EN ISO 12100; EN 61000-6-2; EN 61000-6-3; DIN 18650-1: 2010; DIN 18650-2: 2010; AutSchR: 12/1997	

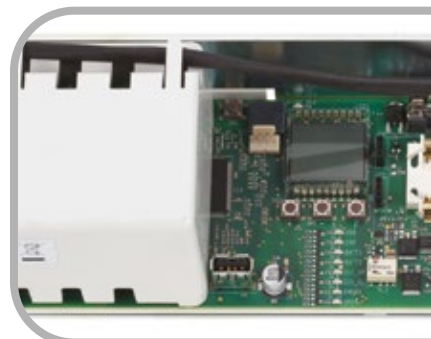


A1400 AIR RD

① Motor with electric lock



② Control unit with



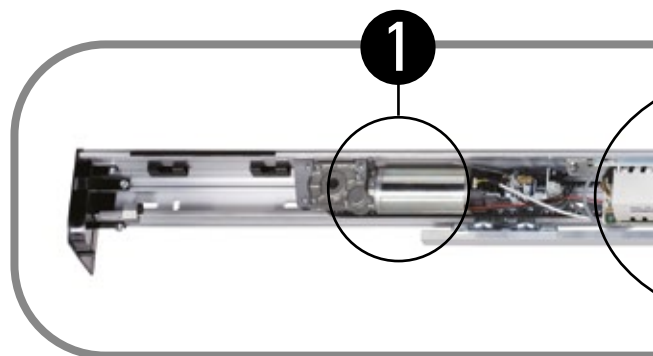
Automatic adjustments

Determination of opening and closing positions.
Selection of ideal speed, acceleration and deceleration.
Safety sensor monitoring (EN16005)
Anti-crushing safety device in compliance with EN16005.

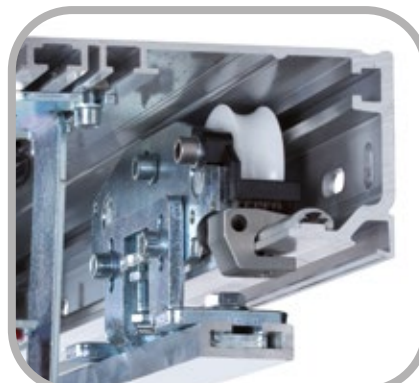
Accessories

Button photocell.
Monitored infrared sensor EN16005.
Monitored sensor microwave radar EN16005.
Profiles for connecting glass leaves.
Electro-mechanical motor lock with manual release.
Motor lock surveillance.
Emergency batteries. Supplied for opening according to EN16005.

Compatible with the profile series FAAC TK20, TK35 and TK50.



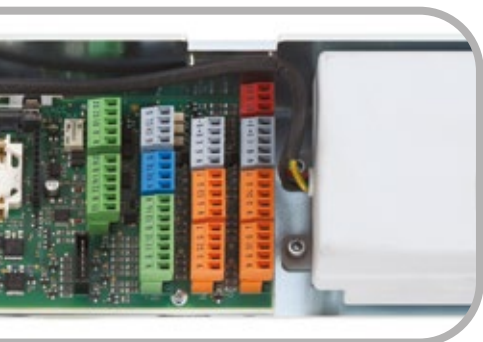
④ Sliding trolleys



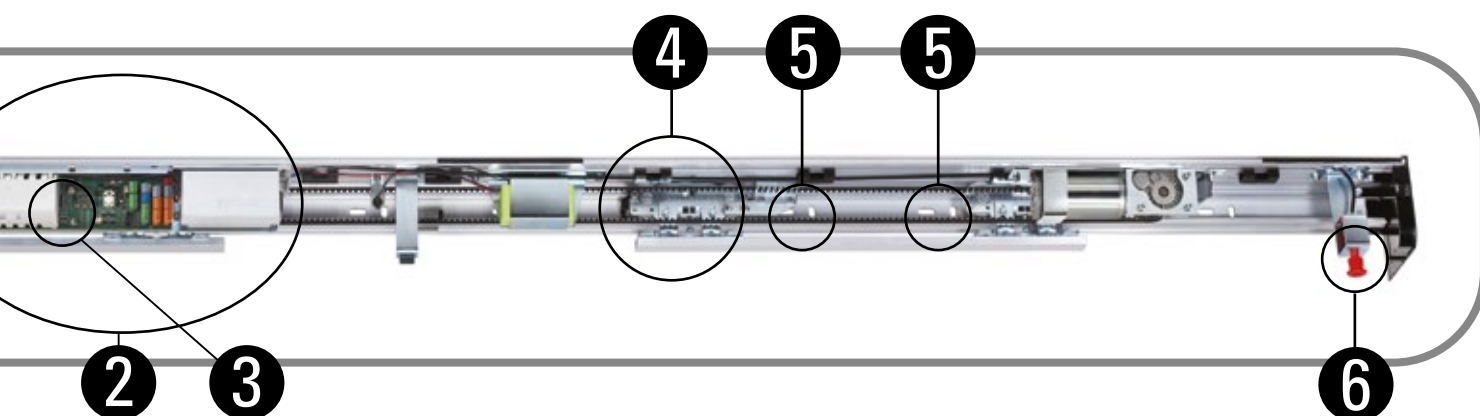
Trolleys with plastic wheels on sliding track in special aluminium alloy on vibration-damping seal. Brush for cleaning the sliding track.



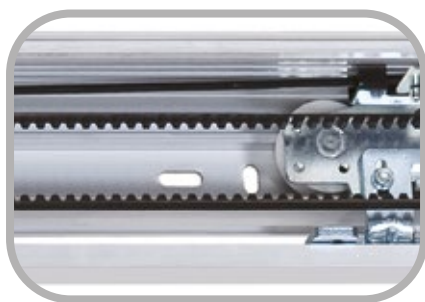
switching power supply



3 USB port for updating and exchanging configuration data



5 Slots for a fast mechanical installation



6 Manual release with knob



Use

Model	Leaf	Open span (mm)	Max. leaf weight (kg)	Self-supporting transom
A1400 AIR RD 1	single	800÷3000	200 kg	NO
A1400 AIR RD 2	double	900÷3000	120 + 120 kg	NO
A1400 AIR A RD 1	single	800÷3000	200 kg	YES
A1400 AIR A RD 2	double	900÷300	120 + 120 kg	YES

A1400 AIR RD

SDK EVO PROGRAMMING KEYPAD

Main functions

Manual (only by key or safety code EN16005)
Night (only by key or safety code EN16005)
Automatic

Access password entering by user and installer
Opening speed adjustment
Closing speed adjustment
Pause time adjustment

Energy Saving enabling
Motor lock and battery kit management
I/O programming maintenance cycle warning
Performed cycle number displaying
Operation inhibition by jumper or key combination

One way
Partial one way
Partial opening
Open
Reset and setup

Diagnosis displaying
Anti-intruder function management
Anti-crushing adjustment
Weekly calendar management



SDK EVO
function keypad

LK EVO FUNCTION KEYPAD

Main functions

Manual
Automatic
One way
Reset and setup

Open
Partial opening
Night

The cause of the door alarm can be found through a combination of flashing LEDs
Operation inhibition by jumper or key combination



LK EVO
function keypad

KEY OPERATED KS EVO FUNCTIONS SELECTOR

Funzioni principali

Manual
Automatic
One way

Open
Partial opening
Night

Supplied as an accessory, it allows the main functions of the automation to be accessed and modified using the key provided.
Supplied with 2 keys.



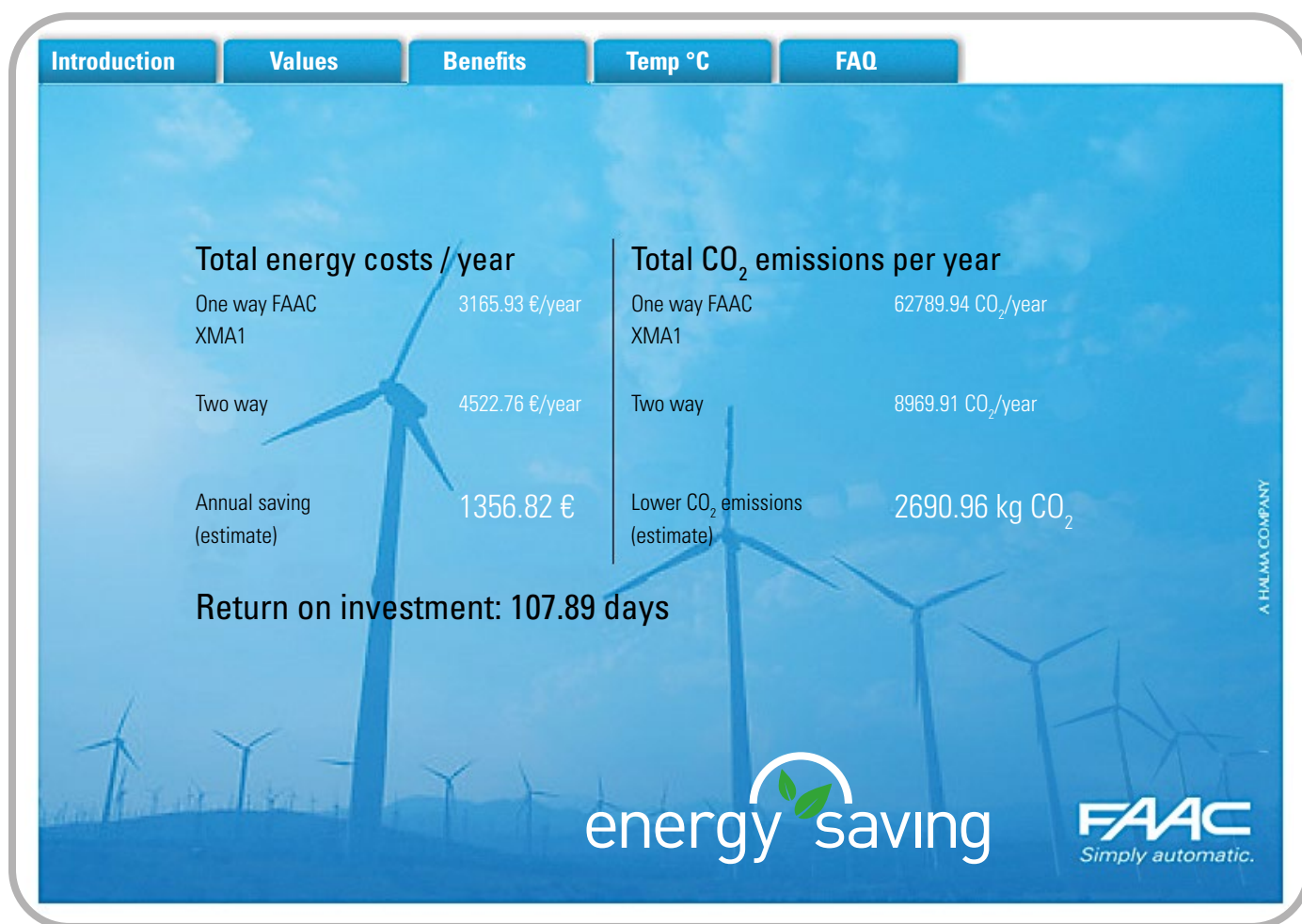
Key operated
KS EVO functions
selector

THERMOTOOL - Energy saving evaluation

The "Energy Saving" device of A1400 AIR RD perfectly optimizes the opening/closing time to avoid useless air dispersion. The energy consumption of the building heating and conditioning system can thus be limited with significant benefits of energy saving and reduced polluting emissions (CO₂).

A software tool called THERMOTOOL has been created in cooperation with BEA and the University of Liège (Belgium) to prove the efficacy of the Energy Saving device. THERMOTOOL enables to quantify energy saving both economically and in terms of reduced CO₂ polluting emissions, according to the dimensional characteristics and the geographical position of the automated entrance.

THERMOTOOL is an effective and easy-to-use tool; it can be viewed in the section dedicated to the A1400 AIR RD automated system on the Web site www.faac.it.



Quality requirements A1400 AIR RD

TÜV-certified in compliance with UN 16005, EN 13849-1 - Pl. "d" Cat. 3 and for 1,000,000 cycles (opening and closing)

In compliance with the safety requirements of the Low Voltage Directive (2006/95/EC), Electromagnetic Compatibility Directive (2004/108/EC) and Machinery Directive (2006/42/EC).

HEADQUARTERS

ITALY

FAAC S.p.A. - Soc. Unipersonale
Via Calari 10 - 40069 Zola Predosa (BO)
Tel. +39 051 61724 - Fax +39 051 0957820
it.info@faacgroup.com - www.faacgroup.com

SUBSIDIARIES

ASIA - PACIFIC

FAAC S.E. ASIA
Selangor, Malaysia
tel. +60 3 5123 0033
www.faacgroup.com.my

AUSTRALIA

FAAC AUSTRALIA PTY LTD
Regents Park, Sidney, NSW
www.faac.com.au

AUSTRIA

FAAC GMBH
Salzburg, Austria
tel. +43 662 85333950
www.faac.at

FAAC BV - TUBULAR MOTORS
Doetinchem, The Netherlands
tel. +49 30 5679 6645
faacbv.info@faacgroup.com
www.faac-tubularmotors.com

BENELUX

FAAC BENELUX NV/SA
Jabbke, Belgium
tel. +32 50 320202
info@faacbenelux.com
www.faacbenelux.com

FAAC BV
Doetinchem, The Netherlands
tel. +31 314 369911
faacbv.info@faacgroup.com
www.faacbv.com

BRAZIL

INDÚSTRIAS ROSSI ELETROMECÂNICA LTDA
Brasília DF, Brazil
tel. +55 61 33998787
www.rossiportoes.com.br

CHINA

FAAC SHANGHAI
Shanghai, China
tel. +86 21 68182970
www.faacgroup.cn

FRANCE

FAAC FRANCE
Saint Priest - Lyon, France
tel. +33 4 72213020
www.faac.fr

FAAC FRANCE - AGENCE PARIS
Massy - Paris, France
tel. +33 4 72213020
www.faac.fr

FAAC FRANCE - DEPARTEMENT VOLETS
Saint Denis de Pile - Bordeaux, France
tel. +33 5 57551890
www.faac.fr

GERMANY

FAAC GMBH
Freilassing, Germany
tel. +49 8654 49810
www.faac.de

FAAC BV - TUBULAR MOTORS
Doetinchem, The Netherlands
tel. +49 30 5679 6645
faacbv.info@faacgroup.com
www.faac-tubularmotors.com

INDIA

MAGNETIC FAAC INDIA PVT LTD.
Chennai - India
Tel. +91 44 421 23297
info@magnetic-india.com
www.faacindia.com

IRELAND

NATIONAL AUTOMATION LTD
Co. Roscommon, Ireland
tel. +353 71 9663893
www.nal.ie

MIDDLE EAST

FAAC MIDDLE EAST FZE
Dubai, UAE
tel. + 971 4 3724190
www.faac.ae

POLAND

FAAC POLSKA SP.ZO.O
Warszawa, Poland
tel. +48 22 8141422
fax +48 22 8142024
www.faac.pl

RUSSIA

FAAC RUSSIA
Moscow, Russia
tel. +7 (495) 646 87 40
www.faac.ru

SCANDINAVIA

FAAC NORDIC AB
Perstorp, Sweden
tel. +46 435 779500
www.faac.se

SOUTH AFRICA

CENTURION SYSTEMS PTY LTD
Johannesburg, South Africa
tel. +27 11 699 2400
www.centsys.co.za

SPAIN

CLEM, S.A.U.
San Sebastián de los Reyes - Madrid, Spain
tel. +34 91 3581110
www.faac.es

SWITZERLAND

FAAC AG
Altdorf, Switzerland
tel. +41 41 8713440
www.faac.ch

UNITED KINGDOM

FAAC UK LTD.
Basingstoke Hampshire, UK
tel. +44 1256 318100
www.faac.co.uk

U.S.A.

FAAC INTERNATIONAL INC
Rockledge, Florida - U.S.A.
tel. +1 866 925 3222
www.faacusa.com

FAAC INTERNATIONAL INC
Fullerton, California - U.S.A.
tel. +1 714 446 9800
www.faacusa.com

FAAC S.p.A. - Soc. Unipersonale
Via Calari 10 - 40069 Zola Predosa (BO)
Tel. +39 051 61724 - Fax +39 051 0957820
it.info@faacgroup.com